

RSMP News

A Quarterly Insight into the Award-Winning Rochester Schools Modernization Program



Excitement Builds for Edison Makerspace!

Once the new makerspace at Edison Technical High School is completed, visitors might think they were in a college-level collaborative design studio. In fact, the project architects' inspiration was 'The Construct', a benchmark setting interactive space at the Rochester Institute of Technology. A makerspace is a learning environment which facilitates hands-on, cross-disciplinary learning, where students can step outside of their normal routines and are empowered to follow their creative passions. Cutting-edge tools and technology are in place, including 3D printers, hand and power tools, and high-quality computers. Makerspaces are designed to easily adapt to the changing needs of students and projects. In the words of LaBella Associates, "The whole idea is that it's never going to remain the same." Heather DeMoras Design Consultants not only designed the interior to be functional, with modern, durable furniture, they also focused on details that will make the area welcoming and exciting for students: abundant light, comfortable small-group areas, clear views of monitors, lockable storage, and whiteboards in unexpected places, such as tabletops.

"This isn't just going to be a raw workspace; it's an exciting launching pad where you feel creative just by walking in."

In a sense, the makerspace is a microcosm of the RSMP, which continues to exceed its ambitious business development and workforce diversity goals. As such, there is a profound passing of the proverbial torch where Rochester City School District students have the opportunity to see role models in the design professions and construction, pursue technical skills, and become the next generation of innovators looking to future challenges with confidence.

Look Inside!

Features:

- **Children's School of Rochester No. 15**
- **Emerging Business Spotlight:**
 - **Safety Zone Ventures (WBE)**
- **Congratulations: Instructional Series Cycle 3**
- **Phase 2 Diversity Goals**

Contact Us:

585.512.3814 | www.rsmppnews.net

@rsmppschools

Also find us at:



Rochester City School District
Every student, by face and name.
Every school, every classroom. To and through graduation.



Opening This Fall, Children's School of Rochester No. 15 Blends Old with New

One of the greatest challenges and assets of modernizing RCSD buildings lies in the facilities' ages. According to the National Center for Education Statistics, in 2013 the average American school was 44 years old. In the RCSD, the average facility was 68 years old in 2013. In 2018, those numbers become 49 and 73, respectively, with the School 1 building clocking in just shy of a century at 97 years old. Although a building of this age presents challenges, architects worked closely with the State Historic Preservation Office to preserve the integrity of the original 1921 building, transforming it into a historic timepiece that boasts all the features and amenities of a modern learning facility. Users will also notice some special carryover details as a legacy from the former School 15 building in their new home!

The Children's School of Rochester No. 15 (CSR15) is currently nearing completion of the construction work and will reopen on 85 Hillside Avenue for the Fall 2018 school year. The ribbon cutting ceremony is planned for September 20th, 2018 at 5:30pm. The existing school building is receiving renovations and an addition has been constructed to accommodate a two-strand elementary school for grades Pre-k through 6. The \$21.3 million budget has supported a complete updating of the building interiors as well as a replacement of the HVAC, plumbing, electrical, and life safety systems. Site improvements include an enlarged bus loop and parking lot, new playground equipment, and a new drop off loop specifically for Pre-k and Kindergarten to alleviate the heavy morning and afternoon traffic congestion. In addition, the main public entrance will now offer a dramatic glass-encased view onto CSR15's updated gym and auditorium.

Architectural services were furnished by Moody Nolan, a Minority-owned Business Enterprise (MBE) and the largest African American-owned design firm, who paid special attention to CSR15's unique three-teacher pedagogy by designing easily sub-dividable classrooms that allow students and teachers to circulate freely between the spaces. Outside of the classroom, you may find students eating in the new cafeteria (which also doubles as a place to play in inclement weather), enjoying the enclosed courtyard or renovated gym/auditorium, making pottery in the art room, or reading in the new school library, which is bathed in beautiful daylight from the preserved bay windows of the historic kindergarten space.

The Children's School of Rochester No. 15 community has a lot to be excited about for the 2018-19 school year: in addition to the modernized building, unsubstantiated rumor has it that, once moved into the Hillside Avenue facility, Principal Jay Piper will be seen riding his bike to school every day! Will the rumor prove true? Stay tuned to find out!

Project Team

Architect- Moody Nolan

Construction Manager - The Pike Company

General Contractor - Holdsworth Klimowski

Mechanical - M.A. Ferraulo

Electrical - Concord Electric Corporation

Plumbing - Thurston Dudek



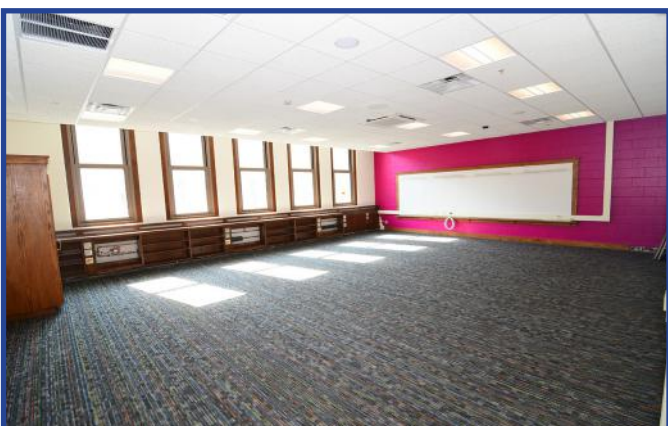
The modernization preserves School No. 1's historic façade.



An exterior view of the new building addition near completion.



The renovated gym/auditorium celebrates school pride.



An updated classroom at CSR15, which showcases old and new.

Emerging Business Profile: Safety Zone Ventures...WBE



Mary Bly, Owner & Founder

If there is one thing Mary Bly, owner of Safety Zone Ventures, knows well it's perseverance. Safety Zone Ventures (SZV) is a construction consulting company, specializing in site safety inspections and OSHA training. Mary is also licensed and certified in asbestos abatement and removal.

Close to 20 years ago, Mary was working for a construction company and thought to herself, "If I can do it for them, why not do it for myself?" With that thought and \$300 dollars in her pocket, Mary set out to break into a field that was traditionally dominated by men. She literally went door to door with a business card and a brochure and was tempted to give up after her first year. But since that first job, she has not looked back.

Mary credits the success of Safety Zone Ventures to being knowledgeable and persistent. Mary attended many meetings to build relationships and make herself known. It also helped that she got her company certified as a Woman-owned Business Enterprise (WBE) and a Disadvantaged Business En-

terprise (DBE) to assist companies in meeting their diversity goals.

The first company to hire Safety Zone Ventures on the Rochester Schools Modernization Program (RSMP) was The Pike Company in Phase 1. Currently, SZV is working in Phase 2 of the program as well. In addition to the RSMP, SZV has worked on other large projects like del Lago Casino. Though the company was solely represented by Mary for quite a few years, she now employs five people and has expanded into the field of Project Administration.



Extending Our Congratulations: Cycle 3 Completion Ceremony



The Rochester Schools Modernization Program (RSMP) would like to congratulate the Cycle 3 participants of the Business Opportunities Program (BOP) Instructional Series! These businesses dedicated eighteen (18) weeks of their time and energy

to enhance their business operations through instruction on various topics such as social media marketing, strategic planning, estimating, costing & pricing, planning & scheduling, contract basics, human resources and business banking. Among the dignitaries attending were Mayor Lovely Warren (pictured above), City Councilperson Mike Patterson, RJSCB Chair Allen Williams and Board Member Ineabelle G. Cruz. We certainly recognize the commitment they have made to their businesses, so please join us in congratulating the successful class!



- Avarus Solutions
- Career Prep
- Coloring on Canvas

- CW Piping, LLC
- Extra Hands General Labor
- MDC

- ML McFarley Security
- New Heights Tree
- Press Clique

- Thompson General Construction
- Just Hair

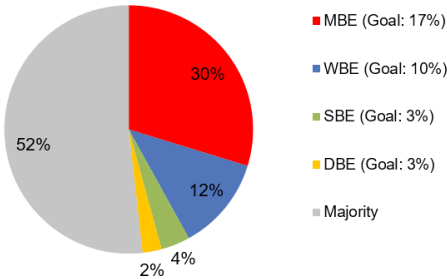
Phase 2 Diversity Goals

The Rochester Joint Schools Construction Board is ensuring Minority and Woman-Owned Business Enterprises (also known as Eligible Business Enterprises, or, EBEs) have real opportunities to pursue public projects, rather than being historically marginalized or overshadowed by large majority-owned businesses. *The RSMP's diversity goals are the highest in NYS and among the highest in the country.* To date, nearly half of businesses with RSMP contracts are minority-owned, woman-owned, small, or disadvantaged business enterprises. Over one-third of the RSMP workforce identifies as minority or female. These pie charts reflect the Independent Compliance Officer's analysis of the Program's progress toward business and workforce diversity goals from the beginning of Phase 2 through June 2018.

- **Total EBE Businesses with RSMP Contracts:** 130
- **Total EBE Contract Dollars (as of June 2018):** \$61,983,309
- **Total Work Hours as of June 2018:** 597,106
- **Total EBE Work Hours as of June 2018:** 164,324

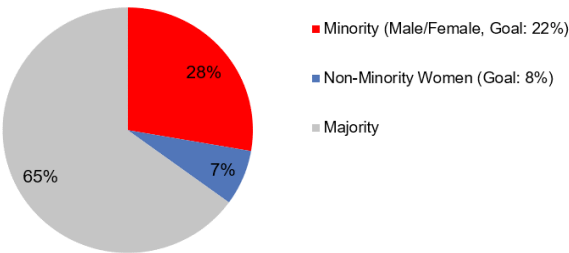
Business Utilization

Businesses with an RSMP contract by certification type



Workforce Participation

RSMP workforce by minority status



Next Issue:

- **John Walton Spencer School No. 16**
- **Instructional Cycle 4 Completion Ceremony**
- **Phase 2C Swing Space**
- **EBE Spotlight**



70 Carlson Road | Suite 200
Rochester, NY 14610

Rochester Joint Schools Construction Board

Allen Williams, Chairperson
Mike Schmidt, Vice Chairperson
Rosiland Brooks-Harris, Treasurer
Bob Brown
Ineabelle G. Cruz
Norman Jones
Thomas Richards
Brian Sanvidge, Non-voting

Pépin Accilien, P.E.
RSMP Program Director